

 **Luminescence**
BREAST SYSTEM



better images mean better results





Welcome to a better way
for YOU and YOUR patient

Welcome to the innovative

Luminescence
BREAST SYSTEM

brought to you by 

A better approach offers:

- *7 and 16 Channels for Improved Image Quality*
- *Enhanced Medial and Lateral Access*
- *Greater Patient Comfort*
- *Lightweight Modular Design*

Invivo, the global leader in MRI coils, now offers the **enhanced Luminescence Breast System** available for 7, 16, and 32 channel systems. **Enhanced Luminescence** is available for Siemens 1.5T Avanto, Espree, Symphony (TIM), 3T Trio (TIM) and Verio MRI systems.



Diagnostic 16 channel
Luminescence Coil

Diagnostic and Interventional
7 channel Luminescence Coil

Clearly, a Brighter Design

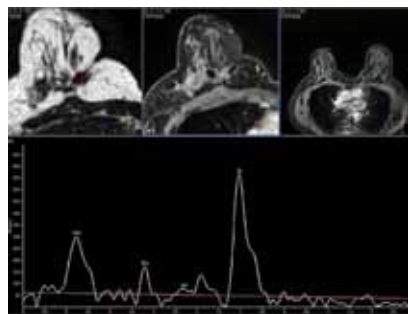
For an easier MRI-guided intervention, **Luminescence** provides light where you need it! Twelve optical fibers shine down on the procedure site, improving visibility for interventions. This specially-designed battery-less lighting system lasts the life of the coil.



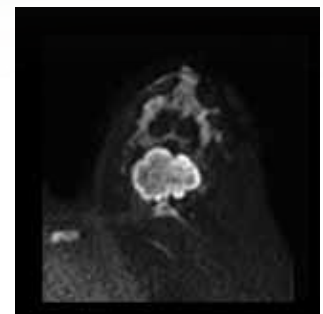
Clearly, Better Image Quality

Invivo knows that superior care starts with superior imaging. The **enhanced Luminescence Breast System** delivers superior signal to noise ratio, isotropic sub-millimeter voxel images, improved image uniformity and parallel imaging performance, all with a faster acquisition time. The **enhanced Luminescence** design also provides better access to the difficult to image axillary area.

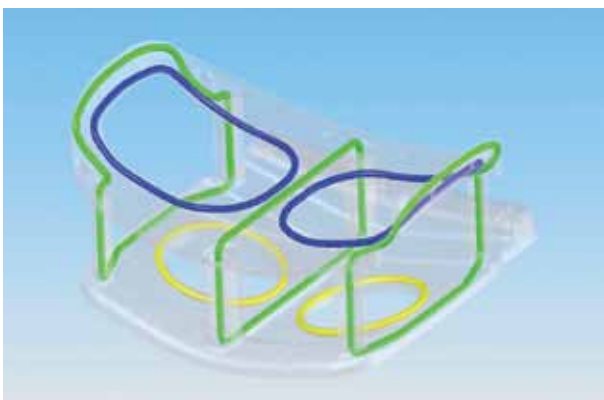
- 16 and 7 Channel Coils
- Unsurpassed SNR
- Achieves isotropic 1mm voxel images
- Improved image homogeneity
- Multi channel unilateral and bilateral imaging



Spectroscopy

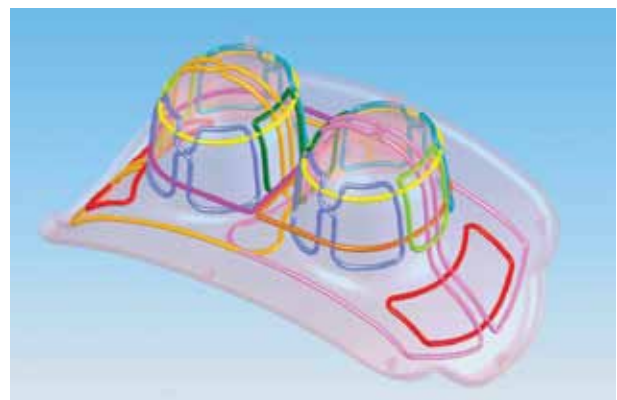


DWI



Designed for Access

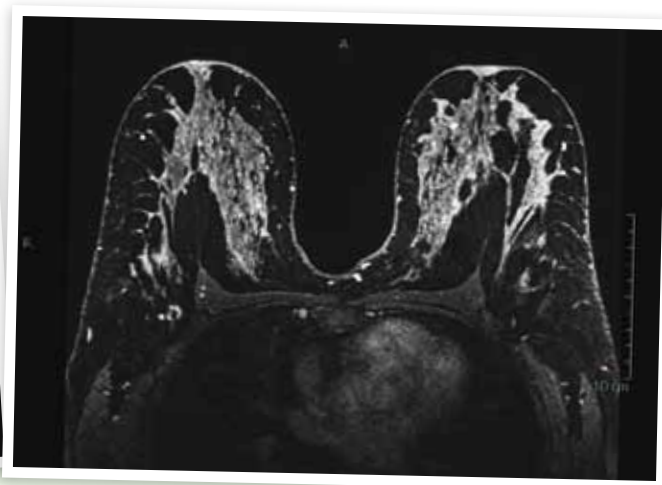
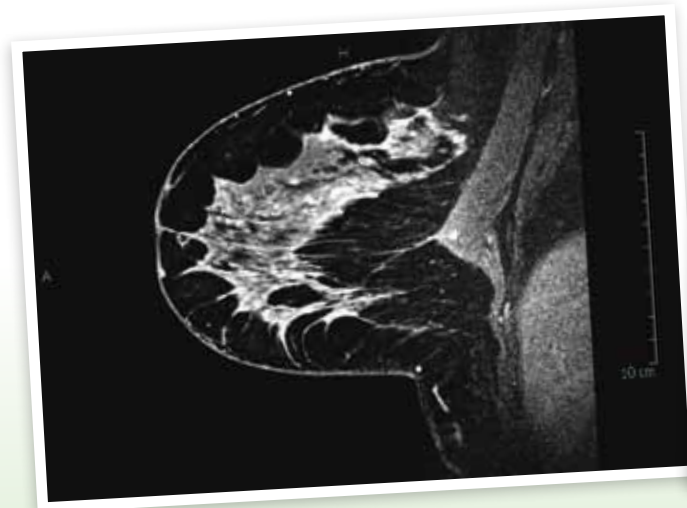
- Superb Parallel Imaging Performance
- More channels
- Faster acquisition time



Designed for Signal

- Luminescence 16 channel technology optimizes acquisition of advanced techniques such as Spectroscopy and Diffusion

Invivo Clinical Solutions for Superior Imaging



Improved Coverage of the Axilla and Chest Wall

In addition to offering you the 16 channel diagnostic coil, Invivo also offers the **Luminescence** 7 channel. It is specifically designed for diagnostic imaging as well as interventions and features cranial, enhanced medial, and lateral access. This enhanced level of access minimizes the distance to the target site of commonly found upper-outer quadrant lesions.



Side View Headrest for cranial access



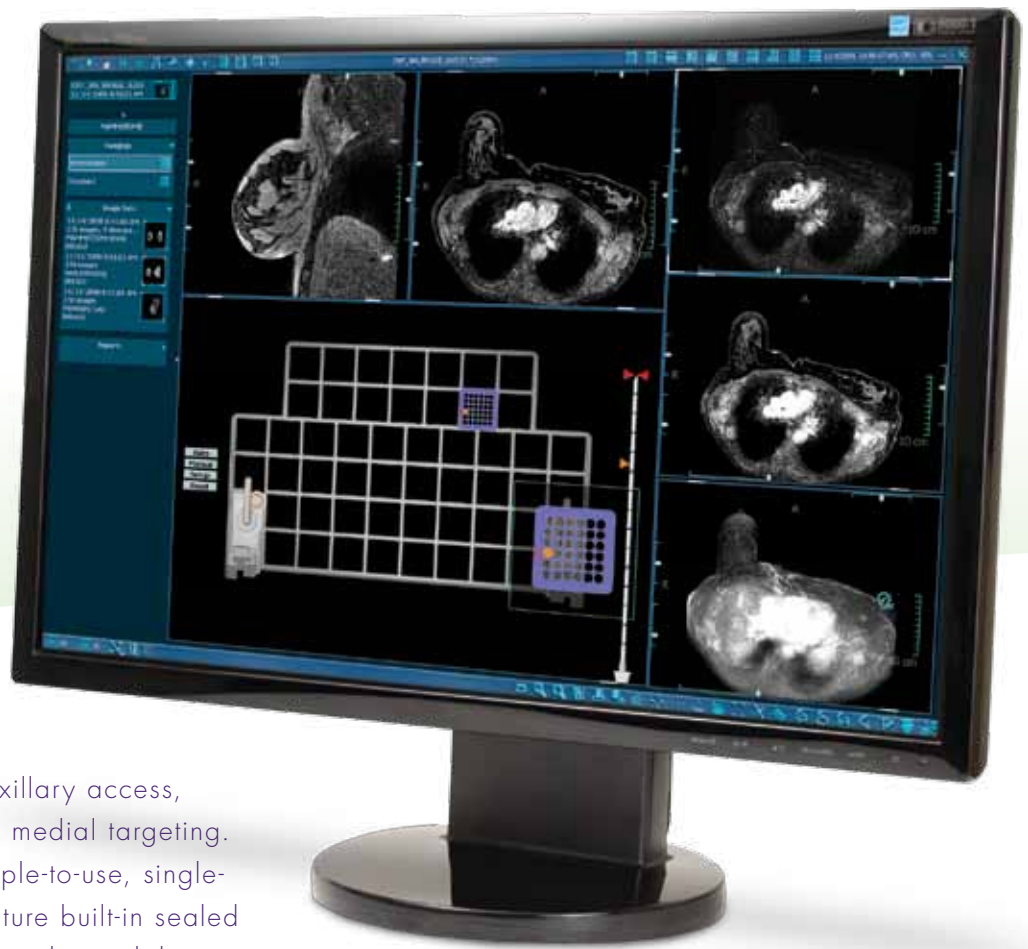
With spa-like comfort, the patient is able to remain still, giving you better results



Spa headrest with open view mirror



ging...

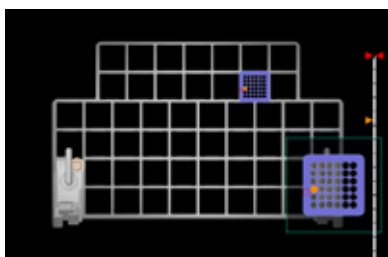


Better Interventional Access

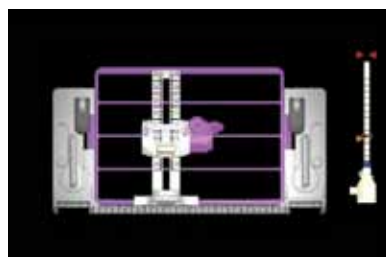
Large lateral plates allow for better axillary access, while enlarged medial plates improve medial targeting. These immobilization plates are a simple-to-use, single-piece disposable design that also feature built-in sealed interventional markers. The enhanced grid immobilization plates continue to provide targeting support for all major vacuum assist biopsy devices.

DynaLOC interventional planning is the perfect complement to the Luminescence

- Enhanced grid plates improve interventional access
- Built-in sealed fiducial markers
- Easy to use single piece disposable design
- Improved rigidity and sturdiness
- Battery-less interventional lighting
- Supports all major vacuum assist devices
- Medial as well as lateral immobilization
- Optional Post/Pillar guidance with angulations



Enhanced Access Grid



Post/Pillar



Cranial Access

The Perfect Size for the Job

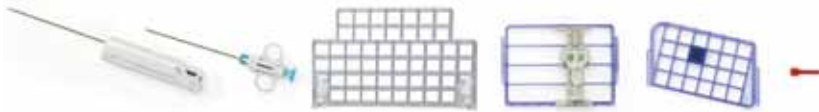
Every woman is unique. Invivo has designed the coils to be large enough to comfortably accommodate practically any size patient while keeping the overall product size small enough for easy setup and removal. Its light-weight components makes placement on the table fast and simple. Technologists love the compact design, which makes the coil easy to lift and store.

The Complete Solution

Enhanced Luminescence is just one element of the "Complete Solution" Invivo offers for Breast MRI. The combination of DynaCAD, ONCAD, ESys and our full line of interventional accessories and breast coils provide a complete solution that offers superior imaging, analysis, comfort, access, and interventional planning. All designed for improved workflow from start to finish.



DynaCAD with ONCAD



Interventional Accessories



ESys Patient Entertainment System



inspired by a better way

For more information about **Luminescence Breast System** or any of the Complete Solution products from Invivo, please call us at 877-invivo1, or visit our website at www.invivocorp.com.

Invivo Corporation

Gainesville, FL U.S.A.
T: 877-INVIVO1
T: 407-275-3220
E: info@invivocorp.com

Europe:
T: +31 (0) 499 378624
contact@invivocorp.com

*Products, services, and technical specifications are subject to change without notice.
©2011 Invivo Corporation All Rights Reserved. 580227 Rev 02*

www.invivocorp.com